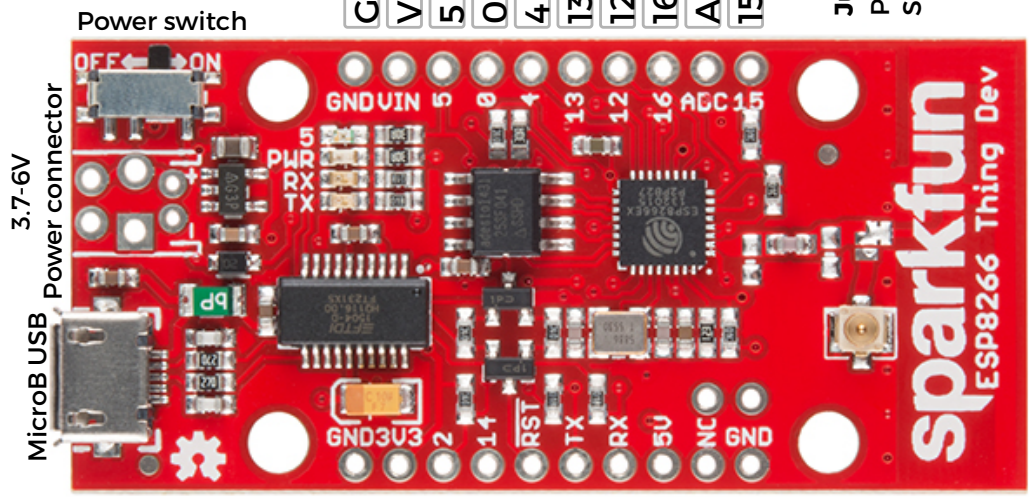


ESP8266 Thing Dev Board (WRL-13711)

Arduino add-on available
80MHz

Name	Arduino
Power	ADC
GND	Serial
Control	Misc



GND	GND
3.3V	3V3
D2	2
SDA	14
SCL/SCLK	Reset
TX	D7
RX	D8
V_USB	5V
Not Connected	NC
GND	GND

u.fl antenna connector
Not Connected
To use swap the solder jumper

GPIO
On bootup will run program if high and bootloader if low
Tied to DTR to run bootloader when reset

GND	GND
Vin	Vin
5	D5
0	D0
4	D4
13	D13
12	D12
16	D16
ADC	A0
15	D15

Jumpers on back
PWR-LED - cut to disconnect power LED
SLEEP-EN - Connect RST to XPD to enable sleep (disables programming)

Power (ESP8266 Thing)
Vin: 3.7V-6V
VUSB: 5V
VCC:3.3V @500mA
Max 12mA per I/O pin

Typical Power (ESP8266 module)
Transmit 135-215mA
Receive 60-62mA
Standby 0.9mA
Deep sleep 10uA

LEDs
Power: Red
User (pin 5): Blue
RX: Yellow
TX: Green
Wi-Fi
802.11 b/g/n
Wi-Fi Direct (P2P) soft AP

PCB Antenna

sparkfun.com
CC BY SA